



**Global Soldering Partner**



# About Us

Indonesia is one of the biggest tin producers in the world, steady and consistence supply of tin as abundant raw material is one of our advantage.

We are private solder company which was established in 2007, located in Bogor, West Java, about 90 minutes from Jakarta city. Even though as new company but our human resources are very experience in solder and flux.

Having vision as the best national solder company, that serves global soldering needs, reliable and trustworthy, measured in deep level of customer satisfaction, we have produced many quality solder product and flux: Solder paste, non-splatter solder wire, electronic soldering flux (wave soldering & SMT) ranging from liquid flux to BGA paste flux, solar cell soldering flux, specialty product such as tin solder wire for aluminium metal, aluminium soldering flux and many other for industrial application.

As an ISO 9001 certified company, we also have our own laboratory for quality checking, supported by comprehensive quality manual with addition personel expertise in this field, our product pass many international standards and meet customer satisfaction.

We provide complete solution for soldering needs, beside products we provide support for customer, this ensure effective and efficient soldering process at customer side.

Continuous improvement is also priority, having internal R&D team, we continually deliver new products be in accordance with new technology in the world of soldering.

At last but not least, we hope to be able to send you our best.

Best Regards,

**Director**  
**PT. Solder Indonesia**

**Global Soldering Partner**



# SOLDER BAR AND WIRE



Type/ Product code	Alloy composition	Melting point (°C)		Product shape								
		Solidus	Liquidus	Solder wire				Solder bar		Anode button	Ingot	
				Core flux	Solid	Size(Ø) - mm	Flux content	Cored flux type	Casting			Extrude
<b>SC Series</b>												
SC07	Sn-R/Cu-0.7	227	229	■	■	0.5 ~ 3.5	2% - 4%	SD-61, SC-61, SW-31, EC-37, SB-15, HB-48	■	■		■
SC07NP	Sn-R/Cu-0.7+Ni/P	227	229	■	■				■	■		■
SC3	Sn-R/Cu-3	230	250	■	■				■	■		■
SC3NP	Sn-R/Cu-3+Ni/P	230	250	■	■				■	■		■
<b>SAC Series</b>												
SA4	Sn-R/Ag-4	221	223	■	■	0.5 ~ 3.5	2% - 4%	SD-61, SC-61, SW-31, EC-37, SB-15, HB-48	■	■		■
SAC0307	Sn-R/Ag-0.3/Cu-0.7	217	227	■	■				■	■		■
SAC305	Sn-R/Ag-3/Cu-0.5	217	220	■	■				■	■		■
SAC305P	Sn-R/Ag-3/Cu-0.5+P	217	220	■	■				■	■		■
SAC307	Sn-R/Ag-3/Cu-0.7	217	221	■	■				■	■		■
<b>Sb Series</b>												
SSb5	Sn-R/Sb-5	234	240		■	1.2 ~ 3.5	Solid		■	■		■

## Core flux type and application information:

- SD-61 Standard core flux, applicable to copper media
- SC-61 Speedy core flux, applicable to copper media
- SW-31 Spider web flux, applicable to copper & brass media, non spla@er
- EC-37 Envy core flux, no clean, halogen free
- SB-15 Standard brass flux, applicable to brass media
- HB-48 Hard brass flux, applicable to brass media
- AC-37 Alu core flux, applicable to aluminium media
- SS-243 Stainless steel flux, applicable to stainless steel media

SD-61, SC-61, SW-31 and EC-37 type are applicable Lead-Free based media.  
SB-15, HB-48 type are applicable to Lead-Free or other based media.

\* Further alloy are available on request

Other diameters and flux contents or type, available on request



**Global Soldering Partner**





# SOLDER PASTE

PT. Solder Indonesia develops solder paste for SMT application for manufacturing and repair. Available in leadfree alloy and leaded alloy.

Properties	PFR-671	PFR-668	PFR-682
Alloy composition	SAC305	SAC305	SAC0307
Powder size	Type 3	Type 4	Type 3 & 4
Powder shape	Spherical	Spherical	Spherical
Specific gravity (23°C)	7.4gr/cm <sup>3</sup>	7.4gr/cm <sup>3</sup>	7.3gr/cm <sup>3</sup>
Flux content	12 ± 0.5%	12 ± 0.5%	12 ± 0.5%
Total halogen in flux	0.06 ± 0.01%	0.06 ± 0.01%	0.06 ± 0.01%
Viscosity	200 ~ 300Pa.s	200 ~ 300Pa.s	200 ~ 300Pa.s
Copper mirror	Pass	Pass	Pass
SIR & ECM pass	No-clean state	No-clean state	No-clean state

### BENEFITS :

1. Slump resistant
2. Wide range of reflow profile types
3. Able to transport under normal temperature
4. Extensive tack time up to 72 hour
5. Clear post process residue



Global Soldering Partner

# PASTE FLUX



Paste Flux PF series is specially developed by R&D of PT. Solder Indonesia for Surface Mount Technology (SMT) application usage, ideal for soldering BGA, mBGA, SMD repair.

Properties	PF-623	PF-635
Appearance	Gelatinous	Gelatinous
Color	Pale yellow	White transparent
Odor	Slight rosin odor	Odorless
Specific gravity (23°C)	1.0gr/cm <sup>3</sup>	1.0gr/cm <sup>3</sup>
Shelf life	24 months below 25°C	24 months below 25°C
Viscosity	120.000cP	310.000cP
Auto ignition temp	>380°C	>380°C
Flux classification	ROLO	RELO
pH	5	5
Solid content (wt %)	>60	>55

## BENEFITS :

1. Non corrosive, halogen free
2. Excellent wettability
3. Long tack time
4. IPC classification ROLO & RELO
5. Stable viscosity, shelf life up to 2 years



**Global Soldering Partner**





Alubond is a high quality, reliable core flux tin solder wire develop specifically for soldering aluminium metal. Available in various Tin-lead and Lead-free alloy.

Properties	AC-37	AC-37	AC-37	AC-37
Alloy composition	S30	S60	SC07	SC3
Specific gravity	9.7gr/cm <sup>3</sup>	8.67gr/cm <sup>3</sup>	7.3gr/cm <sup>3</sup>	7.4gr/cm <sup>3</sup>
Melting point	183 ~ 254°C	183 ~ 191°C	217 ~ 227°C	230 ~ 250°C
Flux content	1.25 ~ 1.35%	1.25 ~ 1.35%	1.45 ~ 1.55%	1.45 ~ 1.55%
Flux classification	ORH1	ORH1	ORH1	ORH1

**BENEFITS :**

1. Easy to use, no extra flux needed
2. Excellent solder joint, strong bond
3. Economical to use
4. Water soluble core flux



**Global Soldering Partner**



# ELECTRONIC SOLDERING FLUX



PT. Solder Indonesia develops wide range of soldering flux, with good and reliable quality for specific application in PCB manufacturing & PCB assembly.

Typical and specification described as below:



Products			Physical/Chemical Properties				Features & Uses
			Specific Gravity (23°C)	Solid Content (wt%)	Viscosity (23°C) (cP)	pH	
Rosin & Resin Type	No clean	NC-555CG	0.805	5.5	1.2	5.5	Wave soldering, gloss soldered surface
	No clean, halogen free	NC-305CM	0.810	8.5	1.4	5.5	Wave soldering, mat soldered surface
		NC-375LM	0.821	14.5	2.4	5.5	Wave soldering, mat soldered surface
		NC-825MM	0.825	15.0	1.6	5.0	Wave soldering, mat soldered surface
	Wire harness tinning flux	WH-223	0.815	2.0	3.7	5.0	Wire tinning, excellent spreading
PCB coating	CP-485	0.970	40.7	10.1	4.0	PCB manufacturing, prevent PCB from oxidation	
Water Washable Type	No clean, halogen free	NC-803CC	0.800	3.0	1.2	5.0	Wave soldering, gloss soldered, suitable for PCB carbon contact application
	PCB copper strip tinning flux	DP-505HF	1.095	10.7	130.1	5.0	PCB copper strip tinning flux
	Wire harness tinning flux	WH-1055	0.820	< 0.1	3.7	5.0	Wire tinning, excellent spreading

**Global Soldering Partner**





# INDUSTRIAL FLUX

PT. Solder Indonesia develops wide range of industrial grade soldering flux, high reliability for extensive industrial application, typical and specification as shown below:

Products		Physical/Chemical Properties				Features & Uses	
		Specific Gravity (23°C)	Solid Content (wt%)	Viscosity (23°C) (cP)	pH		
Water Soluble Type	Wire harness tinning flux	CW-2099	1.143	9.5	14.6	0	Wire tinning, concentrate flux, no residue
	Copper brass radiator manufacturing flux	CB-5032	1.356	9.4	3.9	1.0	Core assembly (baking), concentrate flux
		CB-3330	1.284	2.1	4.3	1.0	Header plate assembly, concentrate flux
		CB-2020	1.001	2.1	3.6	0.5	Water tank assembly, ready to use
	Brass soldering flux	LB-1010	1.035	1.2	2.0	0	Stained glass frame soldering, brass & Pb
		LB-1010N	1.096	5.1	3.4	7.0	Stained glass frame soldering, Zn material
		LB-3025	0.988	2.7	2.9	2.0	Brass wire tinning
		HB-623HT	1.137	8.0	70.8	12.0	Very strong brass soldering flux
	Aluminium soldering flux	AX-28	1.381	22.0	32360.0	6.0	Very strong and corrosive
	Steel soldering flux	FF-4242	1.011	9.0	3.3	0.5	Steel soldering, ready to use
		FF-6313	1.185	30.0	3.0	0	Steel soldering, very strong, ready to use
	Stainless steel soldering flux	SS-2525	1.170	15.0	1.5	0	Stainless steel soldering, using electric solder
		SS-2525HT	1.254	15.0	3.8	0	Stainless steel soldering, using torch gun
		SS-1616HT	1.439	20.0	9.1	1.0	Stainless steel soldering, very strong flux

**Global Soldering Partner**



# TIN ANODE



PT. Solder Indonesia manufacture Tin Anode products for electroplating purpose with high quality and high purity, and customize size according to customer requirement.

Specification	High Purity Tin	
	99.9% Sn (Low lead)	99.99% Sn
Purity	Pb max. 50ppm	Total impurities max. 100ppm
Shape	Bar & ball	Bar & ball
Size	Ball dia. 18mm	Ball dia. 18mm
	Bar 500x100x20mm	Bar 500x100x20mm
	Bar 550x150x15mm	Bar 550x150x15mm
Custom size & shape	Yes	Yes



**Global Soldering Partner**



# ROSIN FLUX PEN

Rosin Flux pen is specially developed by R&D of PT. Solder Indonesia for Surface Mount Technology (SMT) and solar panel soldering ideal for rework and assembling.

Properties	#168	#898
Appearance	Liquid	Liquid
Color	Yellowish	Transparent
Odor	Alcoholic odor	Alcoholic odor
Specific gravity (23°C)	0.9gr/cm <sup>3</sup>	0.9gr/cm <sup>3</sup>
Shelf life	24 months below 25°C	24 months below 25°C
Viscosity	140cP	140cP
Flux classification	ROL1	RELO
pH	5	5
Solid content (wt %)	>15	>15

### BENEFITS :

1. Non corrosive, no clean
2. Excellent wettability
3. Non quick drying
4. IPC classification ROL1 & RELO
5. Shelf life up to 2 years





# ANTI DROSS, SOLDERING GREASE & TIP REFRESHER

- Drossant-2 is dross reducer, white organic powder and does not contain oil, fat or chlorides.
- Reduces dross up to 70%.
- Suitable for leadfree and leaded alloy.
- Available in 1lb plastic jar.

Drossant-2	
Physical & chemical properties	
Appearance	White powder
Melting point	240 C
Specific gravity	2.4gr/cm <sup>3</sup>



- Soldering grease composes of mineral and fat suitable for general soldering.
- Available in 35gr tin container.

Soldering grease	
Physical & chemical properties	
Appearance	Gelatinous
Color	Yellowish
Specific gravity	0.9gr/cm <sup>3</sup>
pH	1
Activator	Zinc chloride
Characteristic	Corrosive

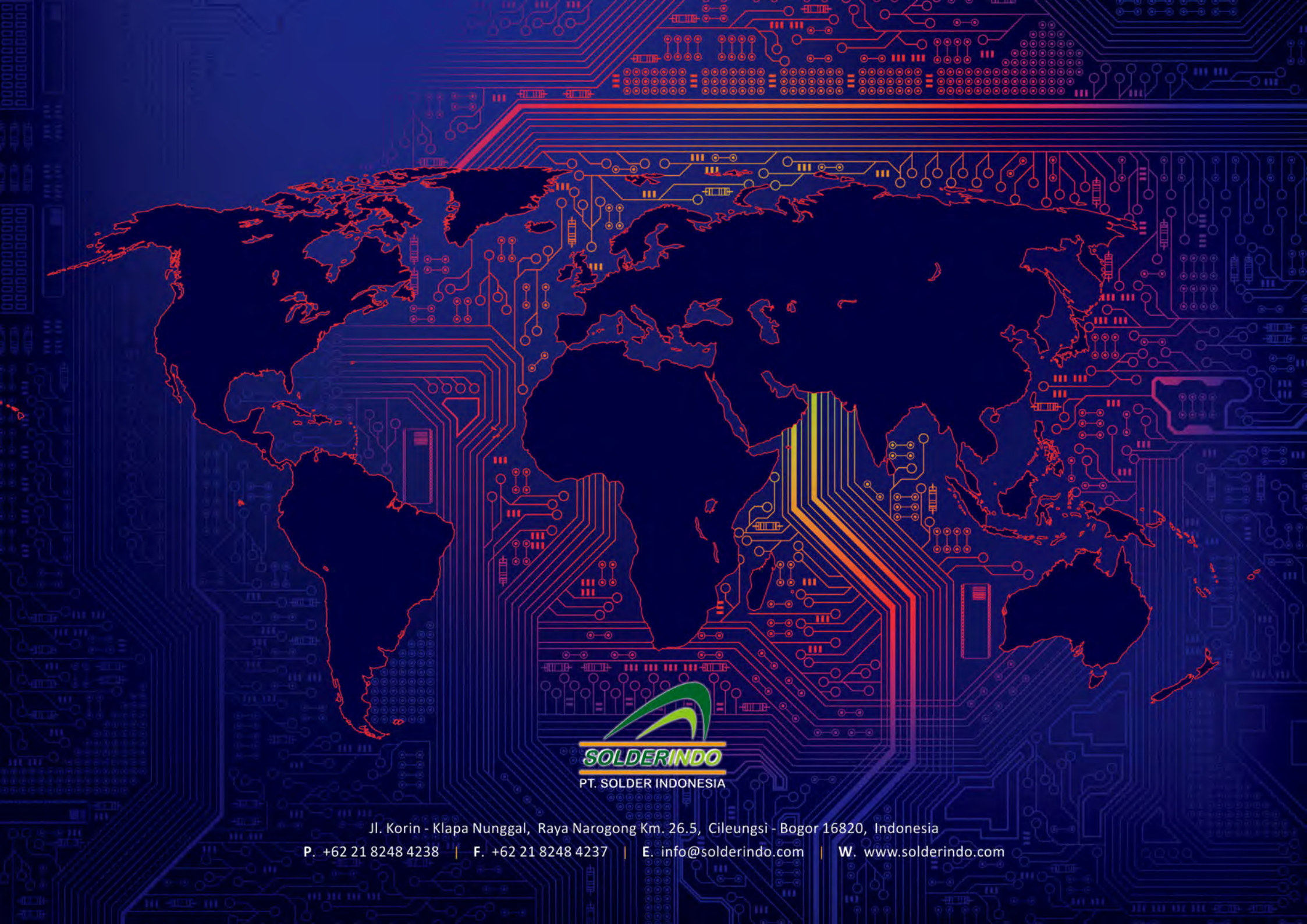


When the solder tip surface starts to oxidize during operation it becomes dark and does not wet properly. To improve work efficiency, use the Tip Refresher

Model	TR-07
Composition	Ammonium phosphate, solder powder
Net. Weight	10gr







Jl. Korin - Klapa Nunggal, Raya Narogong Km. 26.5, Cileungsi - Bogor 16820, Indonesia

P. +62 21 8248 4238 | F. +62 21 8248 4237 | E. [info@solderindo.com](mailto:info@solderindo.com) | W. [www.solderindo.com](http://www.solderindo.com)